

Ordering information

1 SS2 2 - L 3 4 - W

1 Current Rating - 03,04A

Schematic type

-(empty);Standard

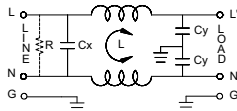
Components table

Refer components table

Bleeder resistor (options)

R ; R=1M ohm; 1/4W min.

Schematic



Components table

Code	Cx(μF)	Cy(pF)	Inductance L=nh x 2 in Amps		Max. Leakage(mA)		Rating Volts		Hi-pot test Volts	
			3A	4A	100VAC	240VAC	VAC	Hz	L-N-G	L-N
S	0.1	2200	2.4	2.4	0.25	0.45	100/240	60/50	2250VDC	1450VDC

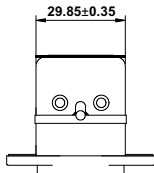
Insertion loss table

(In 50ohm system according IEC/CISPR No.17)

Code	Rating	Comm. Mode(L-G)in MHz						Diff. Mode(L-N)in MHz					
		.15	.5	1	5	10	30	.15	.5	1	5	10	30
S	3A	20	25	30	38	40	40	4	12	18	38	40	40
	4A	20	25	30	38	40	40	4	12	18	38	40	40

Mechanical Dimension

unit: $\frac{\text{mm}}{\text{inch}}$



SUGGESTED MOUNTING CUTOUT (MOUNTING DIMENSION OF SOCKET)

