

### Features

- Superior conducted attenuation performance
- Compact design, lower cost
- With IEC320 AC socket
- Current rating 20A
- Practical solution for general devices

### Marketing Applications

- IPC
- Measuring instruments
- Portable electrical and electronic equipment
- Audio and video processor
- Medical device (not body-coupled)

### Numbering System

**1** SS1 **2** - U **3** **4** **5** - **6**

**1** Rated current

20

**2** Electrical schematic

K: high performance

**3** Components value (refer Filter selection table)

CE: Cx=0.22uF, Cy=2.2nF

CF: Cx=0.22uF, Cy=3.3nF

**4** Grounded choke (optional)

G: Lg= 100uH

**5** Bleeder resistor (optional)

R: R= 1M ohm; 1/4W min.

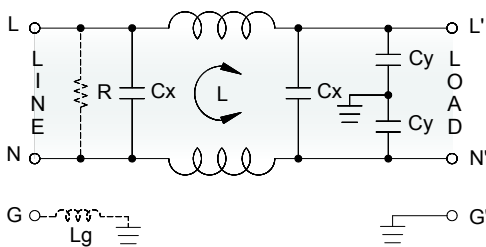
**6** Output connections (refer Output terminal)

Q: fast-on tab (6.3mm)

W: with wired (100mm)

### Electrical Schematic •

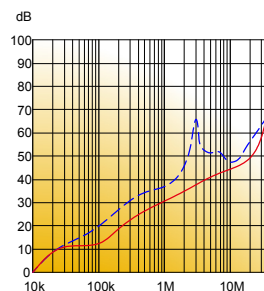
- K: high performance



### Filter Attenuation

Insertion loss (dB) in 50 ohm system CISPR 17 (for reference only)

- 20A



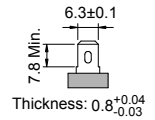
Common mode / Asymmetric (L-G) ————  
 Differential mode / Symmetric (L-L) - - - - -

## Filter Selection Table •

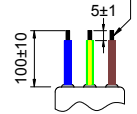
Filter Part No.	Rated Current @50°C [A]	Leakage Current @250VAC/50Hz [μA]	Inductance @10KHz,0.25V [mH]	Capacitance		Output terminal	
				Cx [μF]	Cy [nF]		
K: high performance							
20SS1K-UCE..	20	600	0.6	0.22	2.2	-Q	-W
20SS1K-UCF..	20	600	0.6	0.22	3.3	-Q	-W

## Output Terminal (unit: mm)

- **Q:** fast-on tab based on UL310 standard



- **W:** with wired stripped and tinned



## Mechanical Drawing (unit: mm) •

- snap-in mount

