

Features

- Standard conducted attenuation performance
- Single stage power line filter
- Current rating 10A~30A
- Various output connections
- Practical solution for general devices

Marketing Applications

- Single-phase power supplies
- Data storage
- Broadcast installations
- Network technology
- Medical device (not body-coupled)

Numbering System

1 SS4 - 2 3 - 4 5 - 6

1 Rated current
10,20,30

2 Electrical schematic
1A,1B

3 Type of case (refer Mechanical drawing)
B1

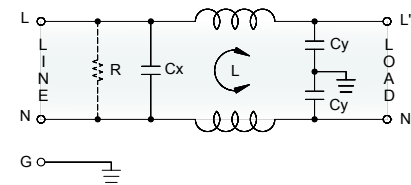
4 Components value (refer Filter selection table)
B: $C_x=0.1\mu\text{F}$, $C_y=3.3\text{nF}$
Blank: $C_x=0.22\mu\text{F}$, $C_y=3.3\text{nF}$

5 Bleeder resistor (optional, refer Filter selection table)
R

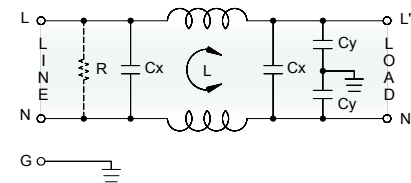
6 Output connections (refer Output terminal)
Q: fast-on tab (6.3mm)
S: screw (M4)
W: with wired (100mm)

Electrical Schematic

● 1A



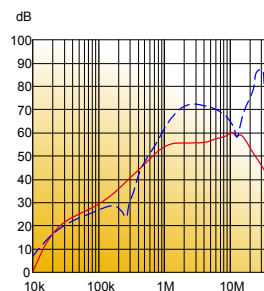
● 1B



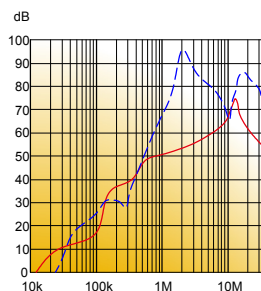
Filter Attenuation

Insertion loss (dB) in 50 ohm system CISPR 17 (for reference only)

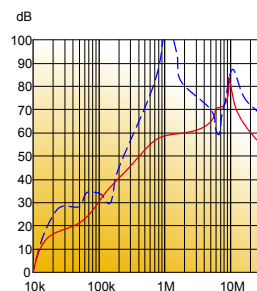
■ 10A



■ 20A



■ 30A



Common mode / Asymmetric (L-G) ————
Differential mode / Symmetric (L-L) - - - -

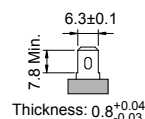
Filter Selection Table ●

Filter Part No.	Rated Current @50°C [A]	Leakage Current @250VAC/50Hz [μA]	Inductance @10KHz,0.25V [mH]	Capacitance		Resistor R [Ω]	Output terminal		
				Cx [μF]	Cy [nF]				
1A:									
10SS4-1AB1-B.	10	600	1.5	0.1	3.3	1M	-Q	-S	-W
20SS4-1AB1-B.	20	600	0.9	0.1	3.3	1M	-Q	-S	-W
30SS4-1AB1-B.	30	600	0.3	0.1	3.3	1M	-Q	-S	-W
1B:									
10SS4-1BB1-.	10	600	1.5	0.22	3.3	2.2M	-Q	-S	-W
20SS4-1BB1-.	20	600	0.9	0.22	3.3	2.2M	-Q	-S	-W
30SS4-1BB1-.	30	600	0.3	0.22	3.3	2.2M	-Q	-S	-W

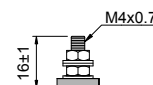
Output Terminal

(unit: mm)

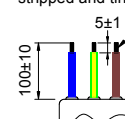
- **Q:** fast-on tab based on UL310 standard



- **S:** screw based on ISO4032 standard

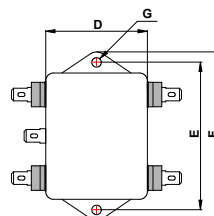
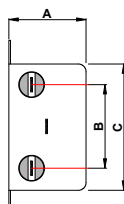


- **W:** with wired stripped and tinned



Mechanical Drawing (unit: mm) ●

- B type



Case	B1
A	39.5
B	42.3
C	65.5
D	52.5
E	74.7
F	84.8
G	2-Ø4.8